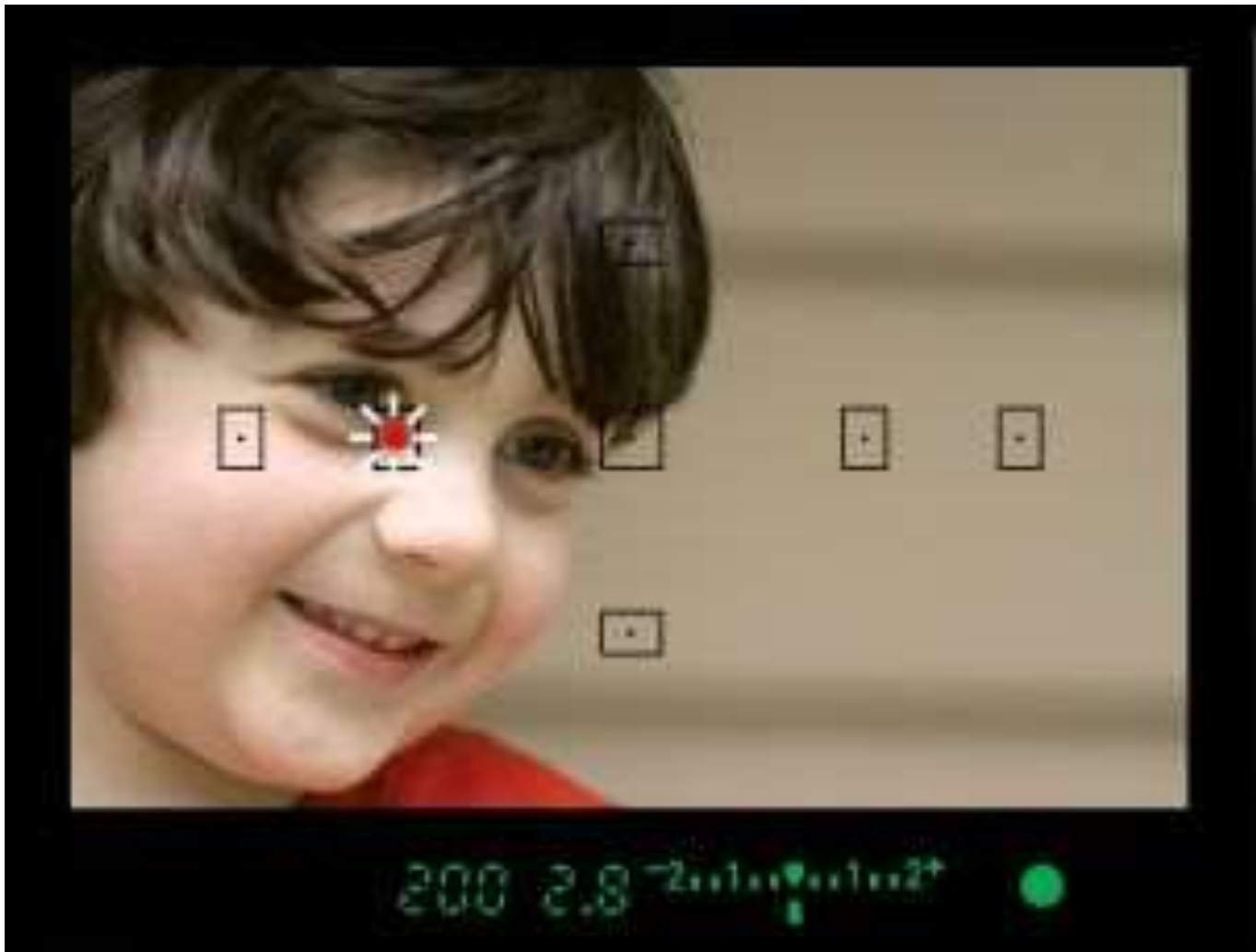
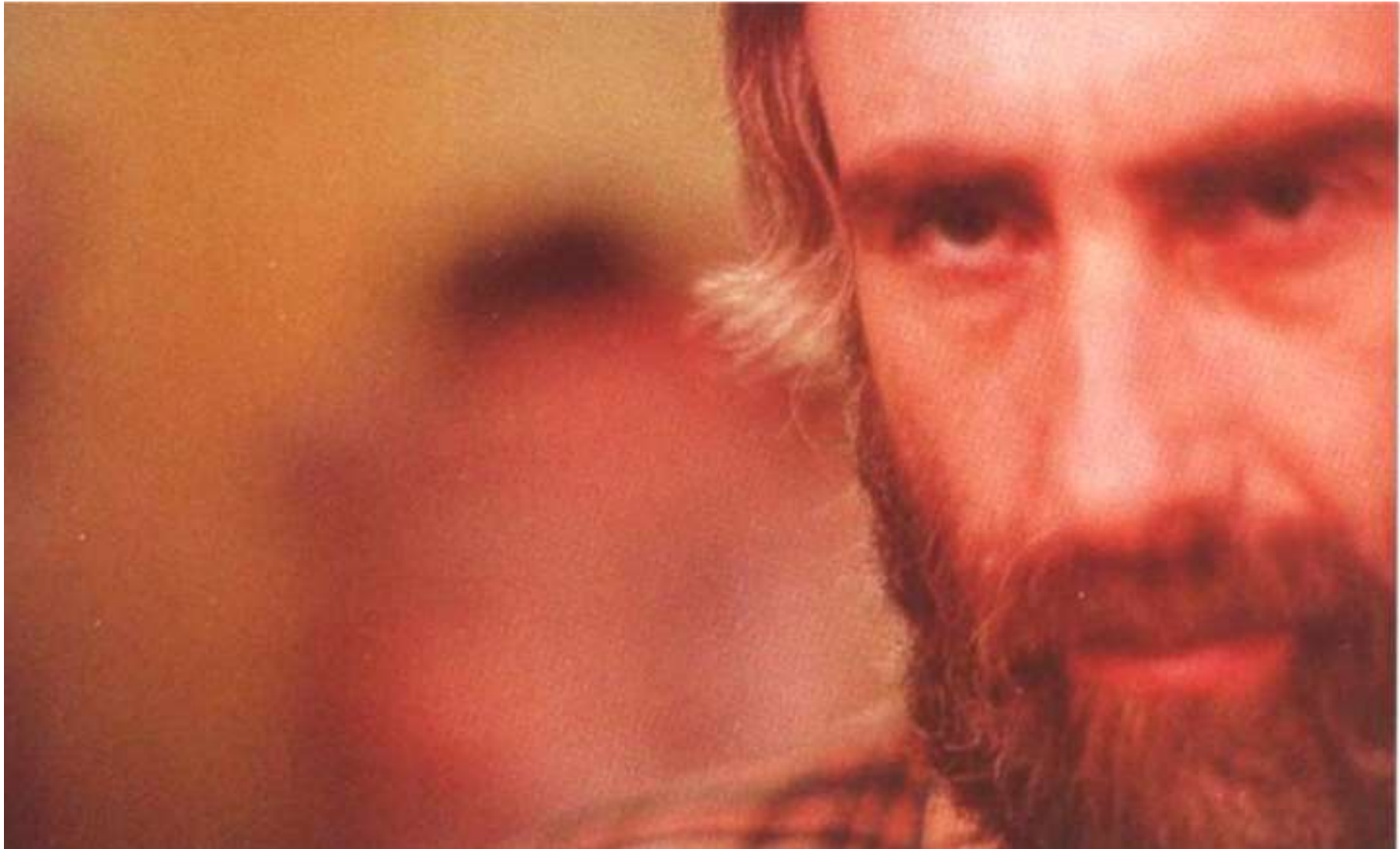


FOCUS











THE LENS

Zoom and different focal lengths



W



T
Q

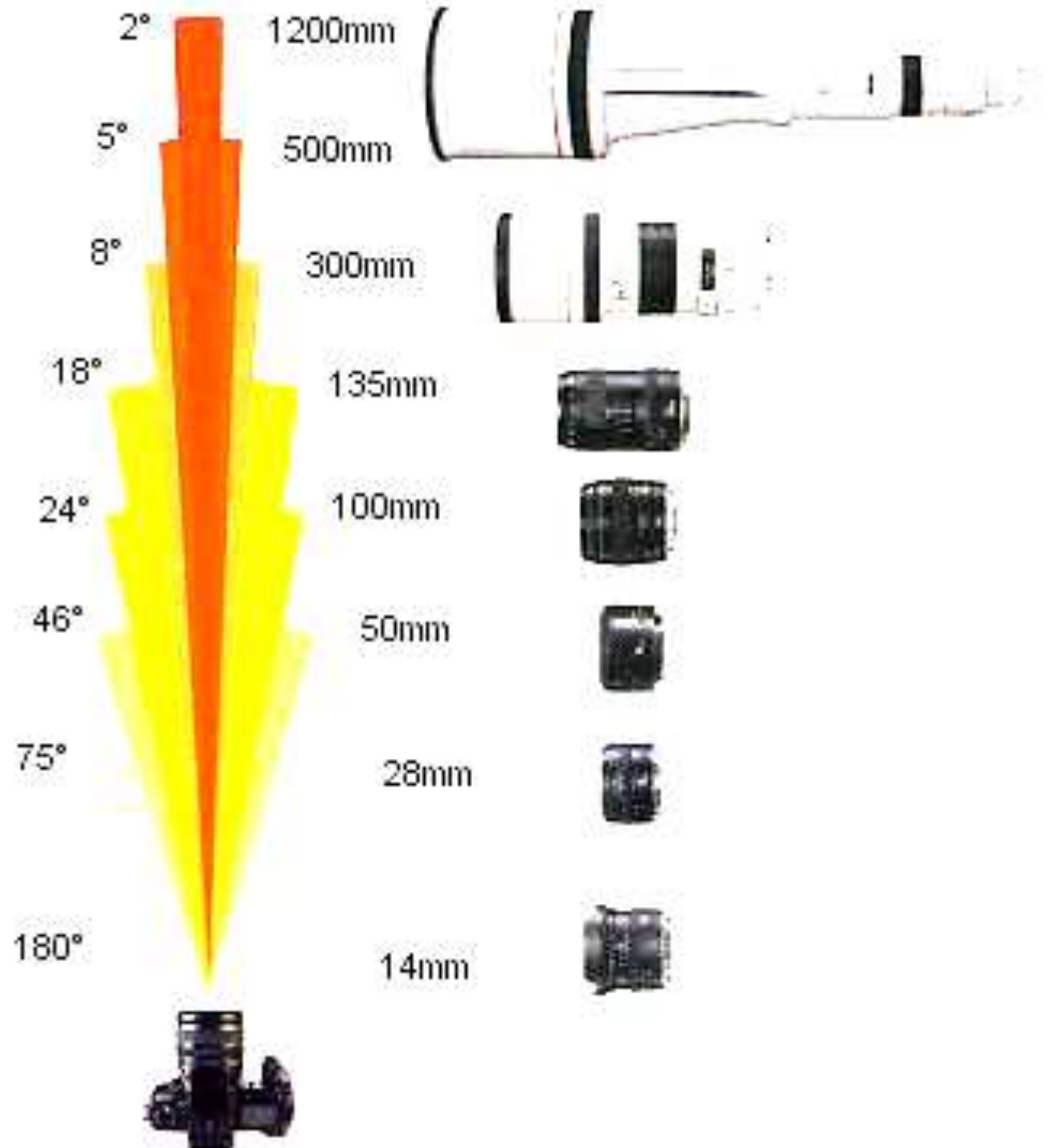
E.ZOOM

OFF

ON

SCN

T (telephoto lens)



W (wideangle lens)







W (wideangle)

close to the subject

everything on focus

wide background

distortion



T (telephoto lens)

far away from the subject

selective focus

background partially visible

correct proportions